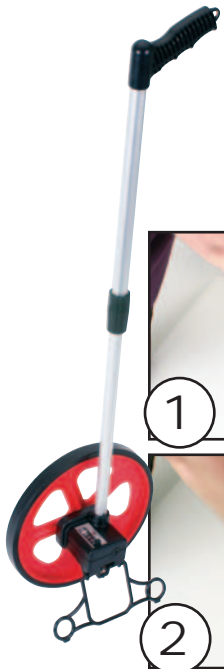
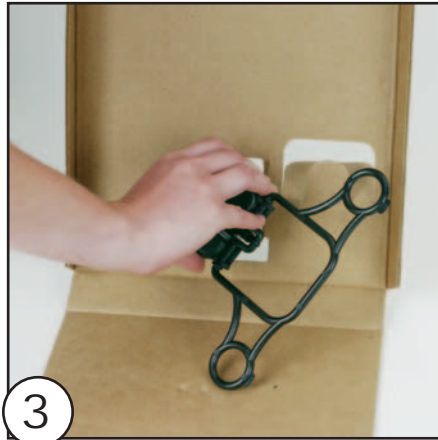


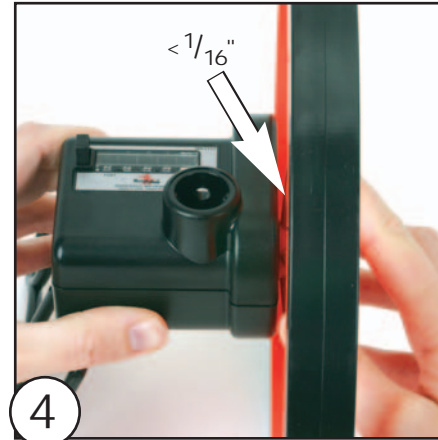
# Measuring Wheel Assembly Instructions



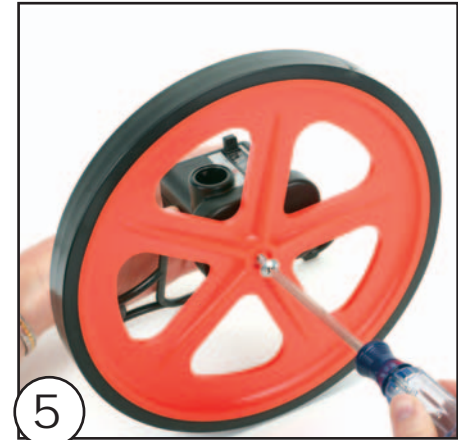
1 Remove the cardboard insert, which contains the handle and counter sub-assemblies, by lifting straight up using the cardboard tabs holding the aluminum handle. Remove the handle from the cardboard insert by pulling the handgrip from left to right.



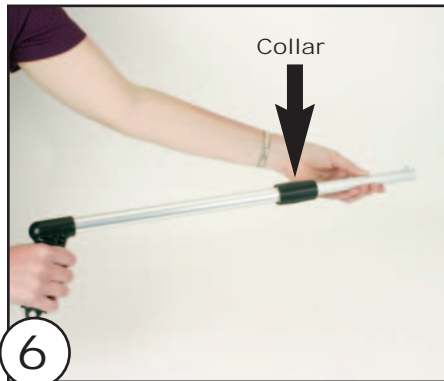
3 Remove the counter and kickstand from the bottom of the cardboard insert. Remove the screw from the plastic bag, and remove the wheel from the box.



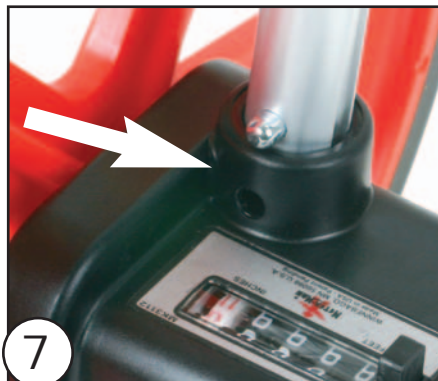
4 Insert the axle shaft into the wheel hub socket and press firmly together. The inner hub of the wheel has a deeply recessed, hexagonal (six-sided) socket to receive the hexagonal end of the counter's axle shaft. It is possible to hear a "snap" when the socket and shaft seat. When the shaft and the socket are correctly assembled, there will be less than 1/16 inch between the wheel spokes and the counter case.



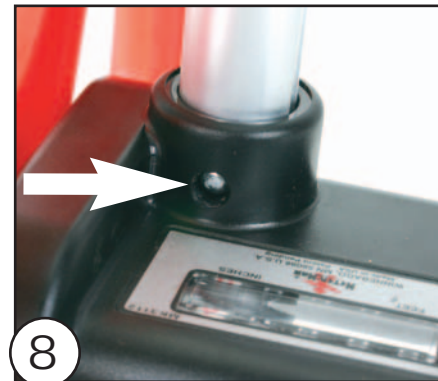
5 Insert the Phillips head, self-tapping screw through the wheel hub and into the axle. Be sure the screw is started straight before tightening. Tighten screw firmly until completely seated.



6 Unlock the black collar on the aluminum handle shaft and extend the handle fully. Lock collar.



7 Align the push button at the end of the handle with the hole in the handle socket on the counter. Insert the handle into the socket, depress the push button completely, and push the handle into the socket until the push button appears in the hole. Because this is a tight, interference fit, it may be necessary to "walk" the handle into the socket by moving it slightly from side to side while pushing inward.



8 When fully seated, the push button will snap upward to lock the handle into position. It is not recommended to remove the handle once installed.



9 Reset the counter to zero, flip the kickstand to its "up" position, and you are now ready to begin measuring.

## METER-MAN, INC.

2 South Main • P.O. Box 746 • Winnebago, MN 56098 U.S.A. • 507-893-4806 • 800-338-5756 • FAX 507-893-3517  
www.meter-man.com • e-mail: meterman@bevcomm.net